



# **Our Journey to Excellence**

**Abbott Nutrition Supply Chain, Sligo**

**2018 ICBE Conference, Killashee Hotel, Dublin**

**Judith McMullan, Global Operational Excellence Manager**



# Abbott Nutrition Supply Chain

14 Manufacturing Sites Globally



# Our Products

Nutritional Devices



# Driving Engagement through Behaviour-Based Principles

# The Shingo Model

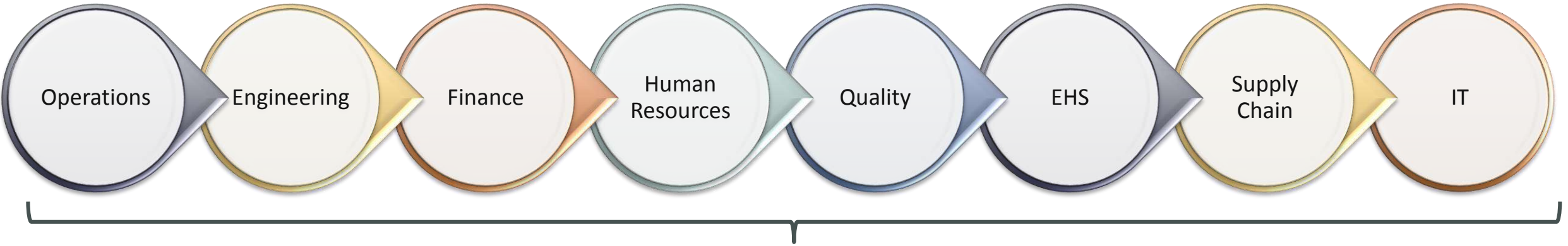
Alignment with the Shingo Guiding Principles

## THE SHINGO MODEL™



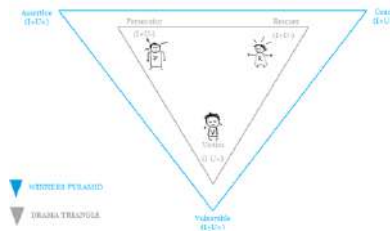


# Our People: Our Greatest Asset





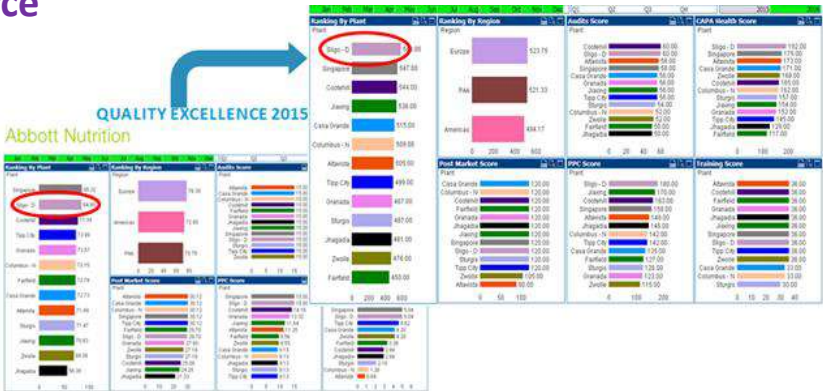
## Respect Every Individual



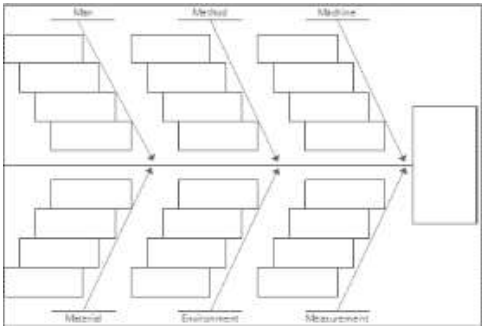
# Continuous Improvement

Focus on Process · Embrace Scientific Thinking · Flow and Pull Value · Assure Quality at the Source · Seek Perfection

## Assure Quality at the Source



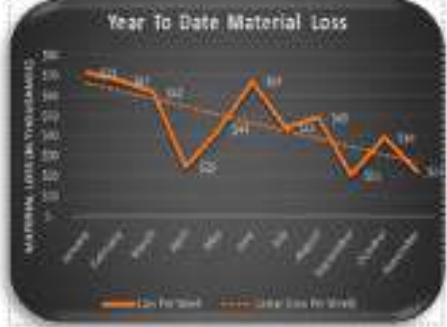
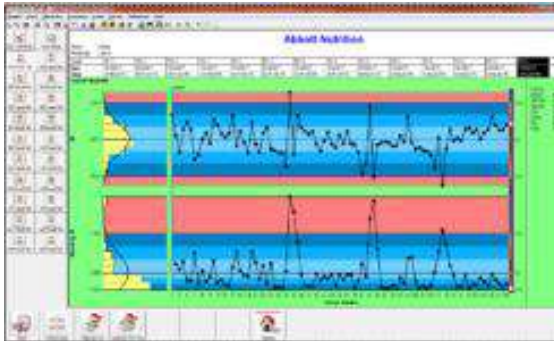
## Seek Perfection



## Focus on Process



## Embrace Scientific Thinking





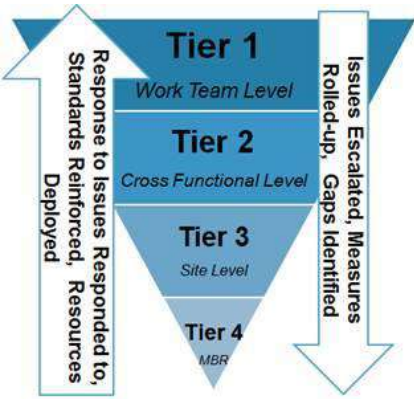
# Enterprise Alignment

Create Constancy of Purpose · Think Systemically

## Create Constancy of Purpose



## Think Systemically

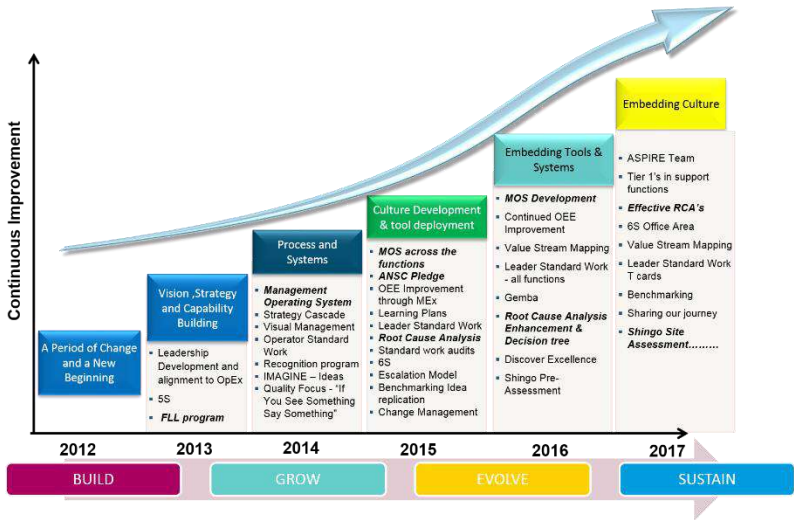




# Results

Create Value for the Customer

## CUSTOMER APPRECIATION DAY





**Oct. 12<sup>th</sup> 2017**

*Congratulations!! Your facility, **Abbott Nutrition Supply Chain Sligo Ireland**, has been awarded the **“Shingo Prize”** per the recommendation of the Shingo examiners. You have joined a distinguished group of recipients that have demonstrated a commitment to achieving operational excellence. We are proud to add your facility to that elite group.*





**Abbott**